

KITCHENS

- High quality kitchens from German designers 'Hacker' in a choice of three contemporary colours with complementary square edged worktops
- Stone worktops available as an upgrade
- Integrated appliances including a single oven, ceramic hob, microwave, dishwasher, fridge/freezer and extractor hood - all visible appliances are by Bosch



BATHROOMS

- All bathrooms and ensuites* will feature sanitaryware by Villeroy & Boch with contemporary style brassware by Grohe and Vado.
- Walls will be tiled to full height in wet areas
- Full length mirror will be fitted above the wash basin

* two bedroom apartments only



BALCONIES

- Apartments with balconies will feature sliding glazed doors
- Balconies are fitted with Grip Deck anti-slip flooring
- Glass balustrades (to most apartments)

HEATING

- Apartments at Altair are fitted with a MVHR (Mechanical Heat Recovery System)
- Penthouse apartments will have a NIBE exhaust air heat pump system
- Bathrooms feature chrome towel rails
- Panel radiators are provided in all other areas



LIGHTING & ELECTRICS

- Brushed steel power sockets and switches will be provided at high level and in strategic places, with white sockets and switches fitted at low level or in concealed places
- Recessed LED lighting is fitted throughout each apartment
- Provision will be made for satellite TV (subject to the usual subscriptions)

STORAGE

- Covered and illuminated cycle stores will be provided at lower ground floor level
- Large storage cupboard provided in each apartment with power and plumbing for a washer/dryer
- Bin stores will be provided in the basement





ALTAIR

COMMUNAL AREAS

ENTRANCE LOBBY

- Boutique hotel style entrance hall and communal areas
- Lift access from entrance to all floors

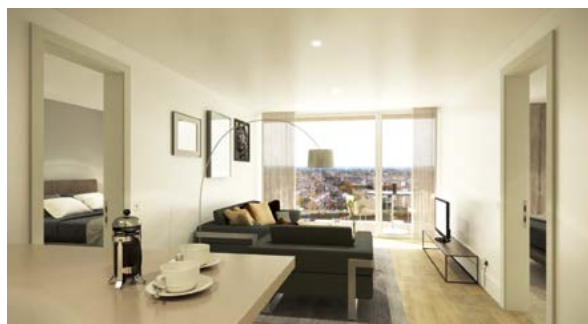
RESIDENTS' ROOF GARDEN

Altair benefits from a stunning roof garden styled with natural planting, high quality artificial grass and comfortable seating areas. This fantastic space is open to all residents and their guests to enjoy. For the benefit of neighbouring apartments access will be restricted from dawn to dusk.



FLOORING

- Amtico flooring will be provided in the living/kitchen areas
- All bedrooms will be finished in a high quality carpet in a neutral colour



SAFETY & SECURITY

- Apartments will be fitted with video & audio entry systems

WARRANTY

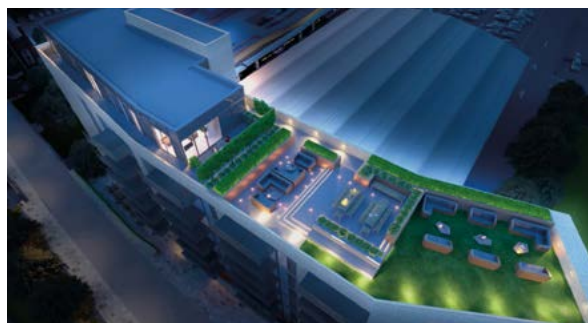
- All apartments at Altair are protected by a 10 year Home Buyer warranty

COMPANIONS

- Small pets are allowed (at the discretion of the management company). Please ask for further details.



PET FRIENDLY APARTMENTS



Disclaimer: Whilst every effort is made to provide an accurate and comprehensive description of the properties under construction, we can only provide plans, dimensions and details of the specification that are accurate at the time of going to press. Please, therefore, view the contents of this brochure as being for guidance only and appreciate that as a development progresses some changes may become necessary. This brochure does not constitute a contract or warranty and Hillcrest Homes reserves the right to make changes as it sees fit without notice. Unless otherwise stated, CGI's and photographs used in this brochure do not depict the development presented here and maybe subject to planning, but have been provided to offer a guide and are therefore for illustrative purposes only. Floor plans and dimensions stated in the brochure are indicative and whilst correct at time of press should be confirmed with Hillcrest Homes.

Important Notice: Hillcrest Homes operates to a strict Health and Safety policy. Building sites are dangerous places and therefore no visitor is allowed on site without a safety briefing, full Personal Protective Equipment and unless accompanied by a representative from Hillcrest Homes. No admittance will be given to unauthorised visitors. To view a development please make an appointment by calling head office on 0161 927 3111.